

# Space Plans

## Ground Floor

### Client Suite Layout

9,414 sq ft / 875 sq m



GRESHAM STREET

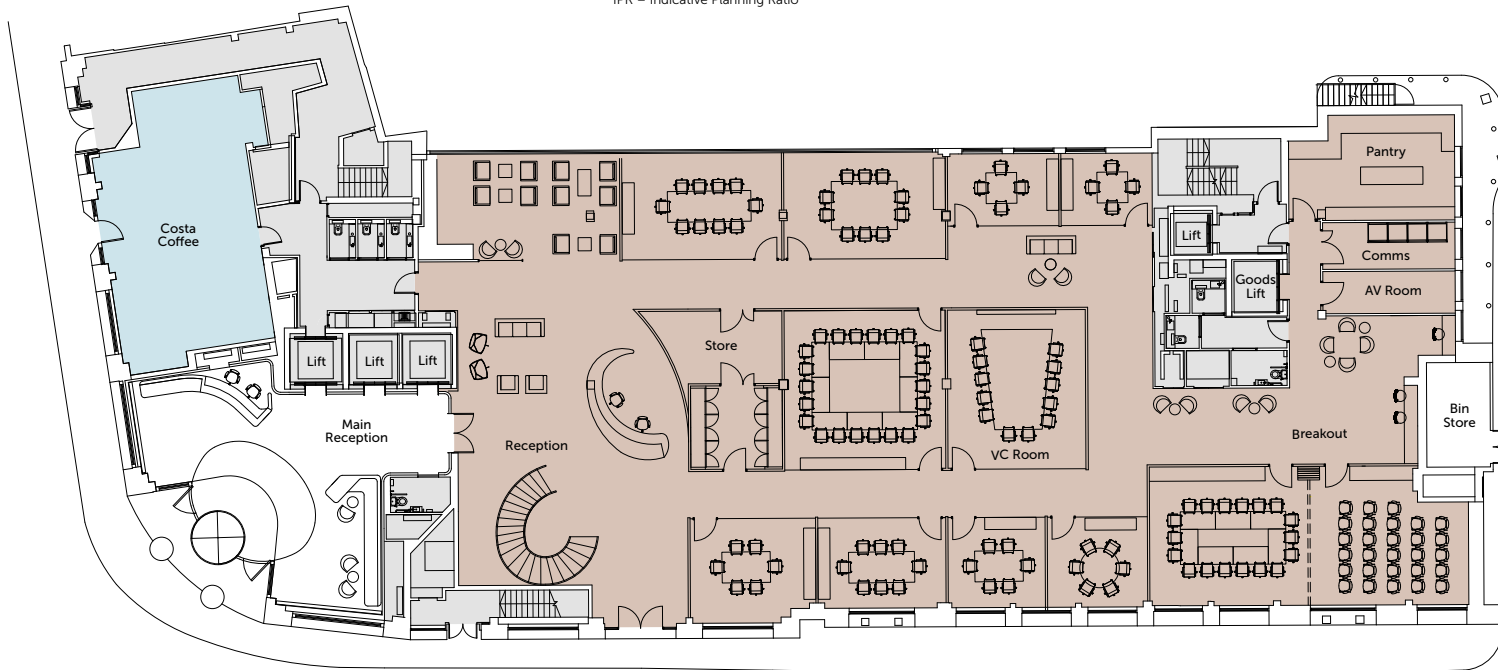
CITY OF LONDON

#### Meeting Rooms

4 Seater Meeting Room x2	8
6 Seater Meeting Room x3	18
8 Seater Meeting Room x1	8
10 Seater Meeting Room x2	20
22 Seater Meeting Room x1	22
Multifunction Room x2	46
12 Seater Video Conference Room x1	12
<b>Total Seat Count</b>	<b>134</b>

IPR Per Meeting Chair 7 sq m 70 sq ft

IPR – Indicative Planning Ratio



- Core
- Office
- Retail

