

Space Plans

First Floor

Trading Floor Layout

13,343 sq ft / 1,240 sq m

Cellular Offices	4
Open-Plan Workstations	149
Total Workstations	153

Meeting Rooms

6 Seater Meeting Room x1	6
8 Seater Meeting Room x2	16
Total Seat Count	22

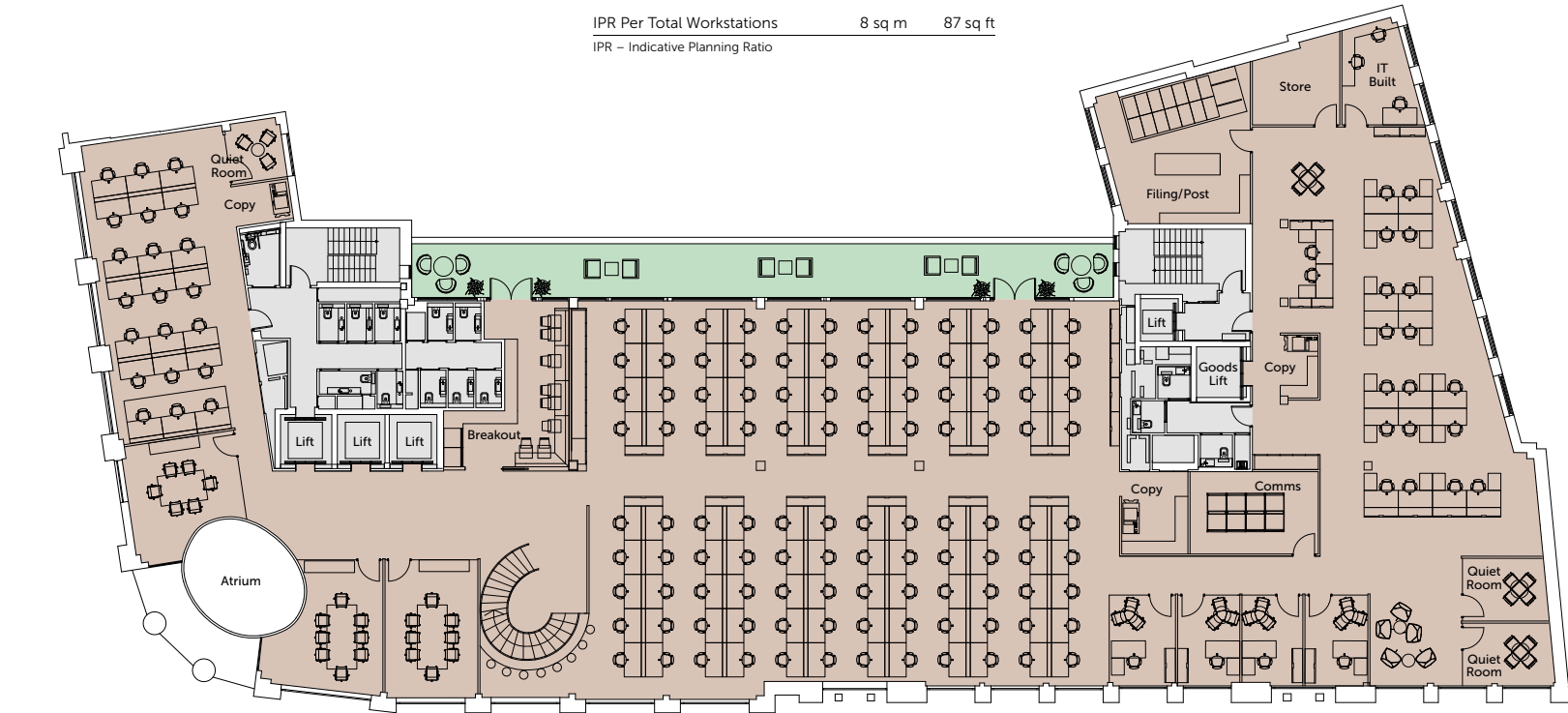
IPR Per Total Workstations 8 sq m 87 sq ft

IPR – Indicative Planning Ratio



GRESHAM STREET

CITY OF LONDON



- Core
- Office
- Terrace

